

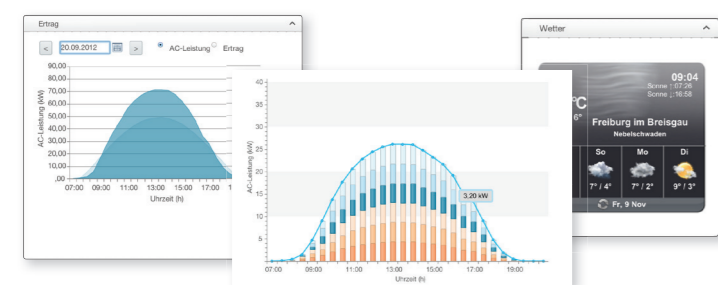
SOLIVIA Monitor

Monitoring for your PV installation

SOLIVIA Monitor is a turn-key monitoring system suitable for monitoring several PV systems, which ensures reliable operation and a maximum return on your investment in your solar system.

With its user-friendly Internet application, which provides a quick overview of the most important values, the yield and the system status, the SOLIVIA Monitor is ideal for monitoring PV systems up to 100 kW.

SOLIVIA Live is the smartphone and tablet PV system monitoring solution from Delta. The application allows monitoring of your PV installation anytime and anywhere. The application is available for Apple iOS, Windows Phone 8 and Android operating systems.



Simple and secure data reporting



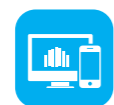
Real-time performance data is gathered from the inverters, sent over the internet, and presented on your computer or web-enabled device with easy to read graphs and reports.

System alerts



Downtime is minimized with automated alerts providing immediate notification of current or potential problems, which increases the return from your solar investment.

Turn-key monitoring system



The SOLIVIA Monitor system includes the gateway, database, and web application to allow a complete monitoring solution of one or many solar PV systems.

Unlimited PV Plants



After registering online, all users can set up an unlimited number of PV plants. This is handy for installers that want to administer or check operation status of their customers' PV plants.

Delta Service & Support

Reliable, Flexible and Competent

Good service is very important. Therefore Delta provides reliable, flexible and competent support. Customer satisfaction and fast response times are not just words for Delta. Delta cares for partners and customers during the complete lifetime of the product.

Our highly motivated Solar Team supports Delta's customers via our dedicated Solar Support Hotline which is there when you need help.

If necessary, you can receive local support from our service teams. Exchange units and components are available within two working days.

Do you need detailed information about the solar inverter; No problem! Our Delta Solar Team offers inverter training courses which can be run either on our premises or on your premises on request.



Sales Contact

United Kingdom

sales.uk@solar-inverter.com
0800 051 4280 (Free Call)

Other European Countries

sales.europe@solar-inverter.com
+49 7641 455 547



www.solar-inverter.com

May 23, 2015 - All information and specifications are subject to change without notice.



Solar Inverter Product Overview

Solar inverters, monitoring and support for PV installations of all sizes

www.solar-inverter.com



About Delta

Smarter. Greener. Together.

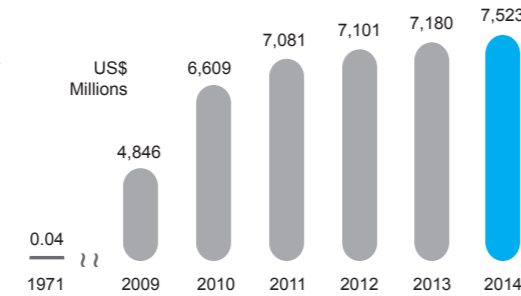
Delta Group, founded in 1971, is the global leader in power and thermal management solutions. Our mission statement, "To provide innovative, clean and energy-efficient solutions for a better tomorrow," focuses our role in addressing key environmental issues such as global climate change. As an energy-saving solutions provider, Delta's businesses encompass power electronics, energy management, and smart green life. Delta has sales offices worldwide and manufacturing facilities in Taiwan, China, USA, Europe, Thailand, Japan, India, Mexico, and Brazil.

Since 1999 the subsidiary Delta Energy Systems has invested in the development and global marketing of the Solar Inverter Program, which has made an important and successful contribution to Delta's focus on offering our customers environmentally-friendly power generation for residential and commercial applications. Further, Delta supports installers and users across the whole lifetime of our solar inverter products.

We care deeply about providing fast response times, knowledgeable personnel and overall customer satisfaction. At Delta Energy Systems we believe that more than good products are needed to maximise your energy efficiency.

Worldwide Revenues

32.6% CAGR
Since 1971



3 kVA - 5 kVA



	RPI H3	RPI H4A	RPI H5A
Input (DC)			
Nominal power (W)	3150	4200	5250
Voltage range (V)	125 ... 600 ¹⁾		100 ... 600
MPP operating voltage range (V)	125 ... 550		100 ... 550
Voltage range for max. power (V)	320 ... 500	180 ... 500 ²⁾	220 ... 500 ²⁾
Max. number of MPP Trackers	1		2
Output (AC)			
Number of phases		1	
Nominal apparent power (VA) ³⁾	3000	4000 ⁴⁾	5000 ⁵⁾
Voltage range (V) ⁶⁾		230 (-20% / +22 %), 1 phase (L, N, PE or L, L, PE)	
Nominal frequency (Hz) ⁶⁾		50 / 60 ± 5	
Power factor adjustable		0.8 capacitive ... 0.8 inductive	
Additional Information			
Max. efficiency (%)	97.0	97.5	97.5
Efficiency EU (%)	96.2	97.0	96.8
Operating temperature (°C)		-25 ... +60 (full power up to +40 °C)	
Protection degree		IP65	

¹⁾ No risk of electrical damage till 630 V
²⁾ When operated with balanced DC inputs (50/50 %)
³⁾ Cos Phi = 1 (VA = W)
⁴⁾ 3.65 kW for United Kingdom
⁵⁾ 4.6 kW for Germany
⁶⁾ AC voltage and frequency range will be programmed according to the individual country requirements

Delta Solar Inverters

Exceptional performance and advanced features

Maximum profitability

Delta solar inverters achieve a peak efficiency of up to 98.6 % and offer one of the largest operating temperature ranges available. Full output up to 58 °C ambient temperature to maximise energy efficiency and ensure maximum profitability.

Easy installation

The lightweight, compact design combined with the unique wall bracket makes installation of the solar inverters greatly simplified. All inverters ship standard with a mounting bracket and AC plug to allow quick installation right out of the box.

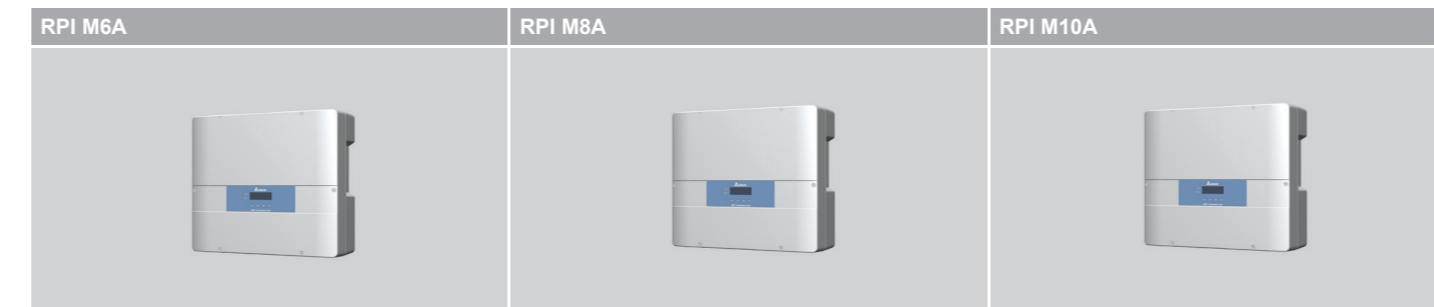
Long lifetime

Delta inverters have a very long lifetime thanks to the durable aluminum housing and high quality robust electronics that are employed in their design. Continuous product improvement is ensured due to comprehensive testing during product development and in production.

Aluminium housing

The aluminium housing of Delta solar inverters ensure long lasting protection against moisture and corrosion. The dust-proof, completely shock-proof housing protects the electronics of the solar inverter from water spray from all directions. This means that it can be installed in protected outdoor areas, damp basements and areas with a high level of dust (agriculture).

6 kVA - 10 kVA



	RPI M6A	RPI M8A	RPI M10A
Input (DC)			
Nominal power (W)	6600	8800	11000
Voltage range (V)		200 ... 1000	
MPP operating voltage range (V)		200 ... 1000	
Voltage range for max. power (V) ¹⁾	315 ... 850		415 ... 800
Max. number of MPP Trackers		2 ²⁾	
Output (AC)			
Number of phases		3	
Nominal apparent power (VA) ³⁾	6000	8000	10000
Voltage range (V) ⁴⁾		230 ± 20 % / 400 V _{AC} ± 20 %; 3 phase + PE or 3 phase + N + PE	
Nominal frequency (Hz) ⁴⁾		50 / 60 ± 5	
Power factor adjustable		0.8 capacitive ... 0.8 inductive	
Additional Information			
Max. efficiency (%)	98.3	98.3	98.3
Efficiency EU (%)	97.6	97.9	98.0
Operating temperature (°C)		-25 ... +60 (full power up to +40 °C)	
Protection degree		IP65	

¹⁾ When operated with balanced DC inputs (50/50 %)
²⁾ Parallel inputs: 1 MPP Tracker, Separate inputs: 2 MPP Trackers, input load: symmetrical and asymmetrical (for M6A, M8A, M10A: 40/60 %)
³⁾ Cos Phi = 1 (VA = W)
⁴⁾ AC voltage and frequency range will be programmed according to the individual country requirements

The Delta Advantage

More than just great products



Strong and reliable company with local presence

- Experienced contact partners in your area and in your language
- Knowledge of the local grid access conditions

Highly reliable products with extensive testing and continuous improvement

- Extensively tested products in extreme conditions
- Robust electronics and die-cast aluminum chassis
- IP65 protection class for outdoor installation

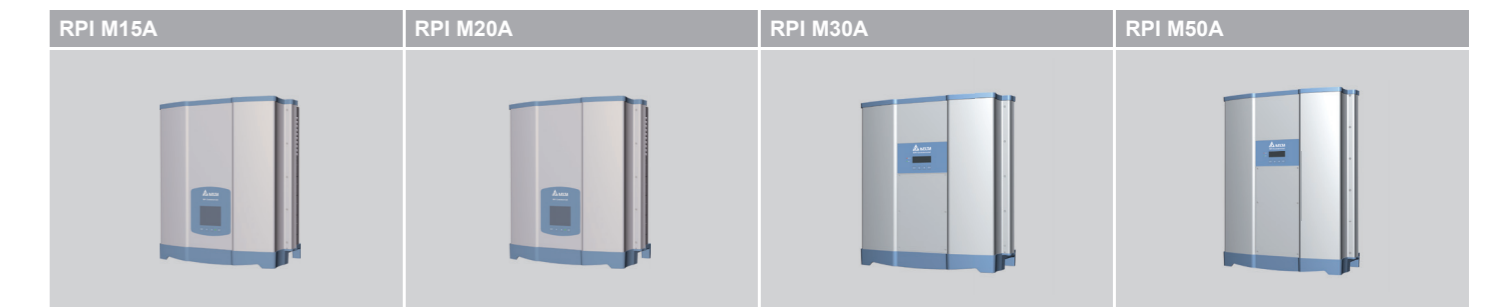
Extensive support for sales partners, installers, and plant operators

- Delta Solar Team offers inverter training courses which can be run on your premises upon request
- Dedicated Solar Support Hotline which is there when you need help

Solar inverters with exceptional power density and advanced features

- The inverters in the new RPI series are characterized by a high power density, the M50A has one of the highest in the 50 kVA inverter class

15 kVA - 50 kVA



	RPI M15A	RPI M20A	RPI M30A	RPI M50A
Input (DC)				
Nominal power (W) ¹⁾	15600	20600	31500	52000
Voltage range (V)		200 ... 1000		200 ... 1100 ²⁾
MPP operating voltage range (V)		200 ... 1000		
Voltage range for max. power (V) ³⁾	355 ... 820	470 ... 820		520 ... 800
Max. number of MPP Trackers		Parallel inputs: 1 MPP Tracker, Separate inputs: 2 MPP Trackers, input load: symmetrical and asymmetrical (for M15A / M20A / M30A: 33/67 %; for M50A: 40/60 %)		
Output (AC)				
Number of phases			3	
Nominal apparent power (VA) ⁴⁾	15000	20000	30000	50000
Voltage range (V) ⁵⁾		230 ± 20 % / 400 V _{AC} ± 20 %; 3 phase + PE or 3 phase + N + PE		
Nominal frequency (Hz) ⁵⁾		50 / 60 ± 5		
Power factor adjustable		0.8 capacitive ... 0.8 inductive		
Additional Information				
Max. efficiency (%)	98.3	98.4	98.5	98.6
Efficiency EU (%)	97.9	98.1	98.2	98.4
Operating temperature (°C)		-25 ... +60 ⁶⁾		
Protection degree		IP65		

¹⁾ Max. power per DC input with asymmetrical load is: 11.1 kW for M15A; 14.8 kW for M20A; 21 kW for M30A; 34.8 kW for M50A
²⁾ For some firmware versions limited to 1000 V
³⁾ When operated with balanced DC inputs (50/50 %)
⁴⁾ Cos Phi = 1 (VA = W)
⁵⁾ AC voltage and frequency range will be programmed according to the individual country requirements
⁶⁾ Nominal power without derating up to: +49 °C for M15A, +47 °C for M20A, +49 °C for M30A, +48 °C for M50A, with nominal voltages (AC and DC) and Cos Phi = 1